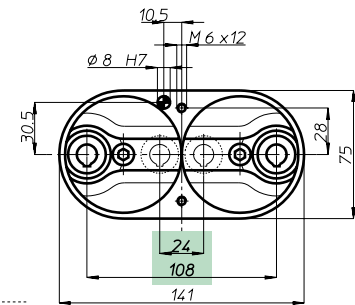
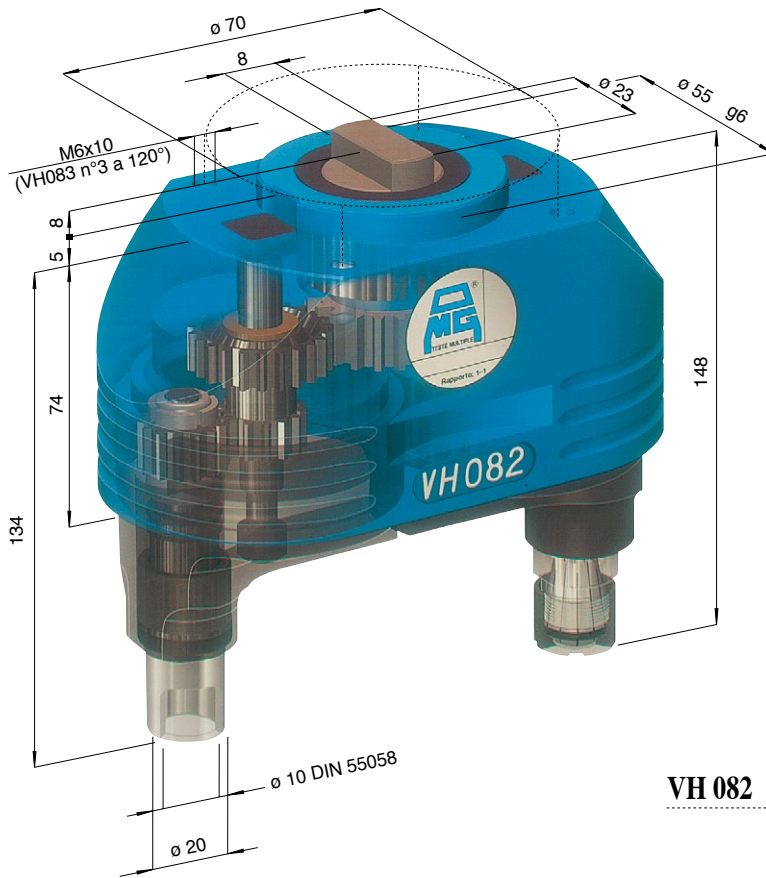


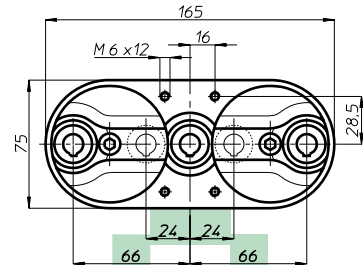
CAPACITA' FORATURA
DRILLING CAPACITY ϕ 10

VH

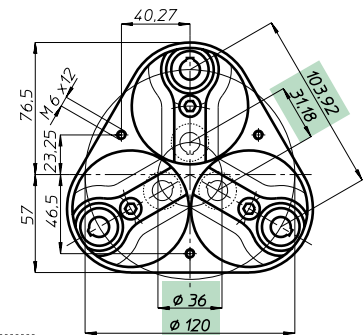
modello 08



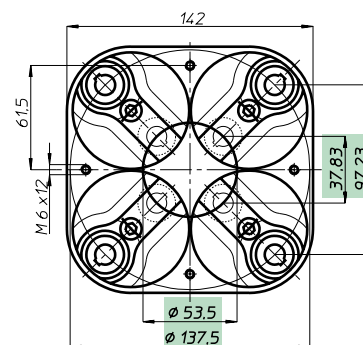
VH 082



VH 083 L



VH 083



VH 084

Testa modello Head type	VH 082	VH 083 L	VH 083	VH 084
Articolo Item	VH 082 P	VH 083 LP	VH 083 P	VH 084 P
Attacco utensile Spindle type	ER 16 - max ϕ 10			
Articolo Item	VH 082 D	VH 083 LD	VH 083 D	VH 084 D
Attacco utensile Spindle type	DIN 55058 - ϕ 10			
N. mandrini Spindles nr.	2	3	3	4
Campo di lavoro min.	24	24 + 24	ϕ 36	ϕ 53,5
Centre distances max.	108	66 + 66	ϕ 120	ϕ 137,5
Capacità foratura	Acciaio Rm 500 N/mm ² - ϕ 8			
Drilling capacity	Ghisa GG25 - ϕ 10			
Maschiatura Tapping	M 6			
Rapporto Ratio	1 - 1			
Velocità RPM	4.000			
Peso Weight	Kg. 2,2	2,9	3,4	4,6

Teste multiple ad assi variabili • Variable axis heads

BAH

TA-CP

TA

MO

HT

VH

TSI/TSX

T

MT-TC-TC3

Accessori
Accessories

Appendice tecnica
Technical supplement

6-6



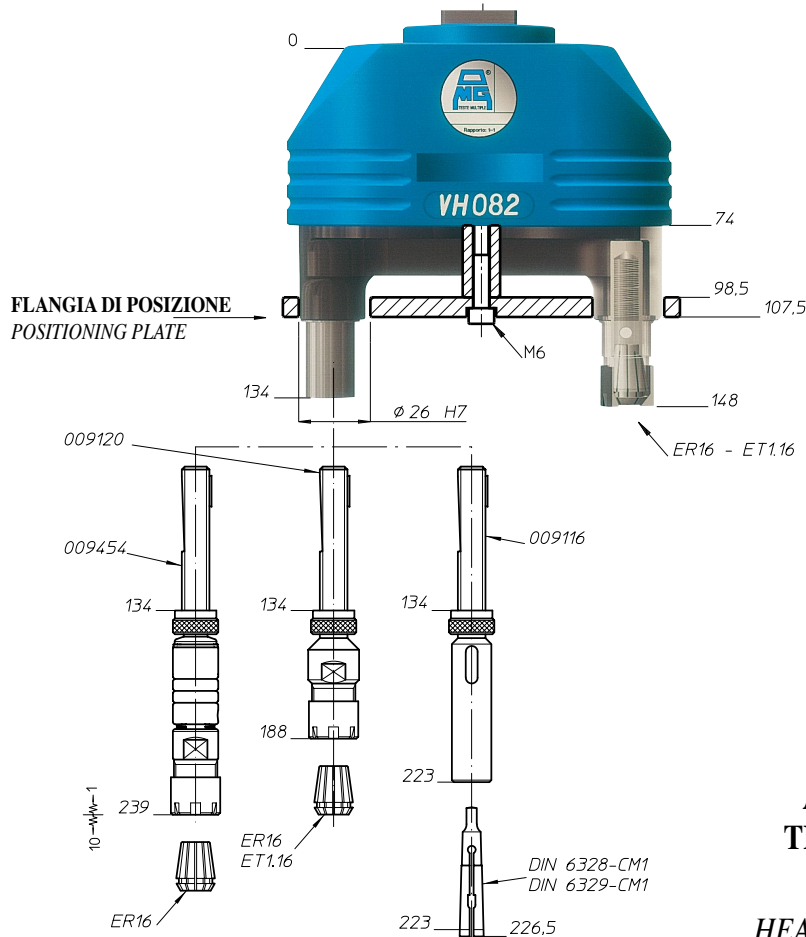
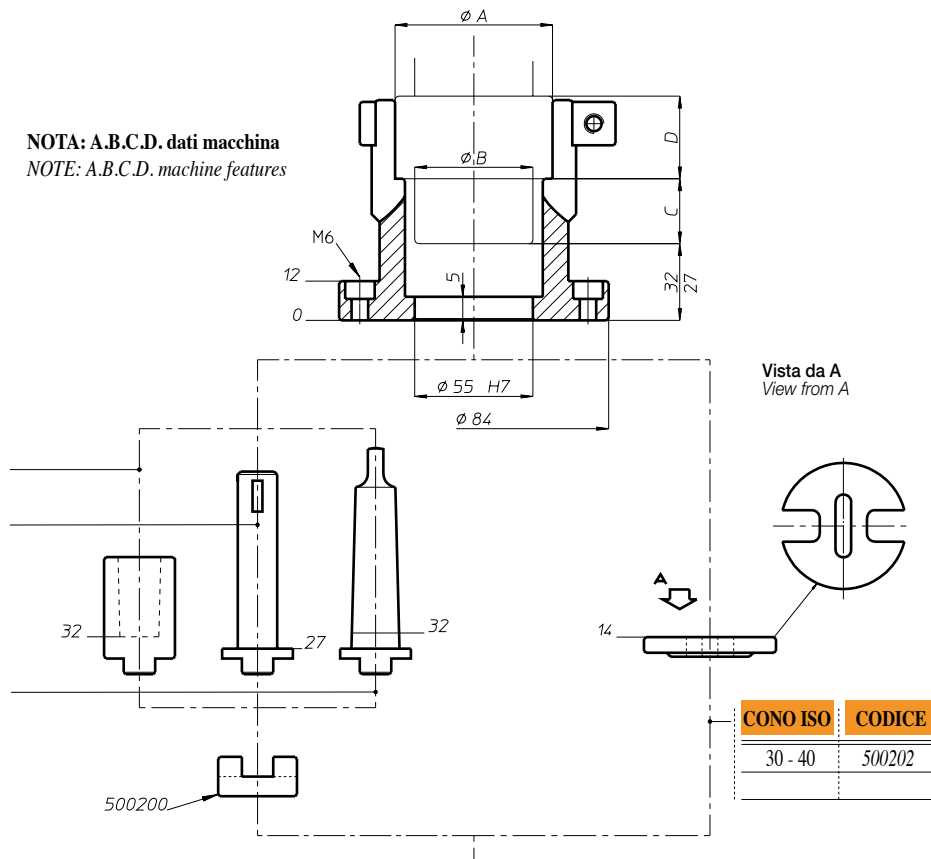
MANICOTTO DI COLLEGAMENTO - CONNECTION COLLAR

NOTA: A.B.C.D. dati macchina
NOTE: A.B.C.D. machine features

DIN 238	CODICE
B 10	011277
B 12	011278
B 16	011279
B 18	011280
B 22	011281
B 24	011282

DIN 55058	CODICE
16	525405
20	525406
28	525407
36	525408

DIN 228	CODICE
CM 1	011115
CM 2	011120
CM 3	011125
CM 4	011130
CM 5	011135



**ACCESSORI PER
TESTE MULTIPLE**
**MULTISPINDLE
HEADS ACCESSORIES**

Teste multiple ad assi variabili • Variable axis heads

